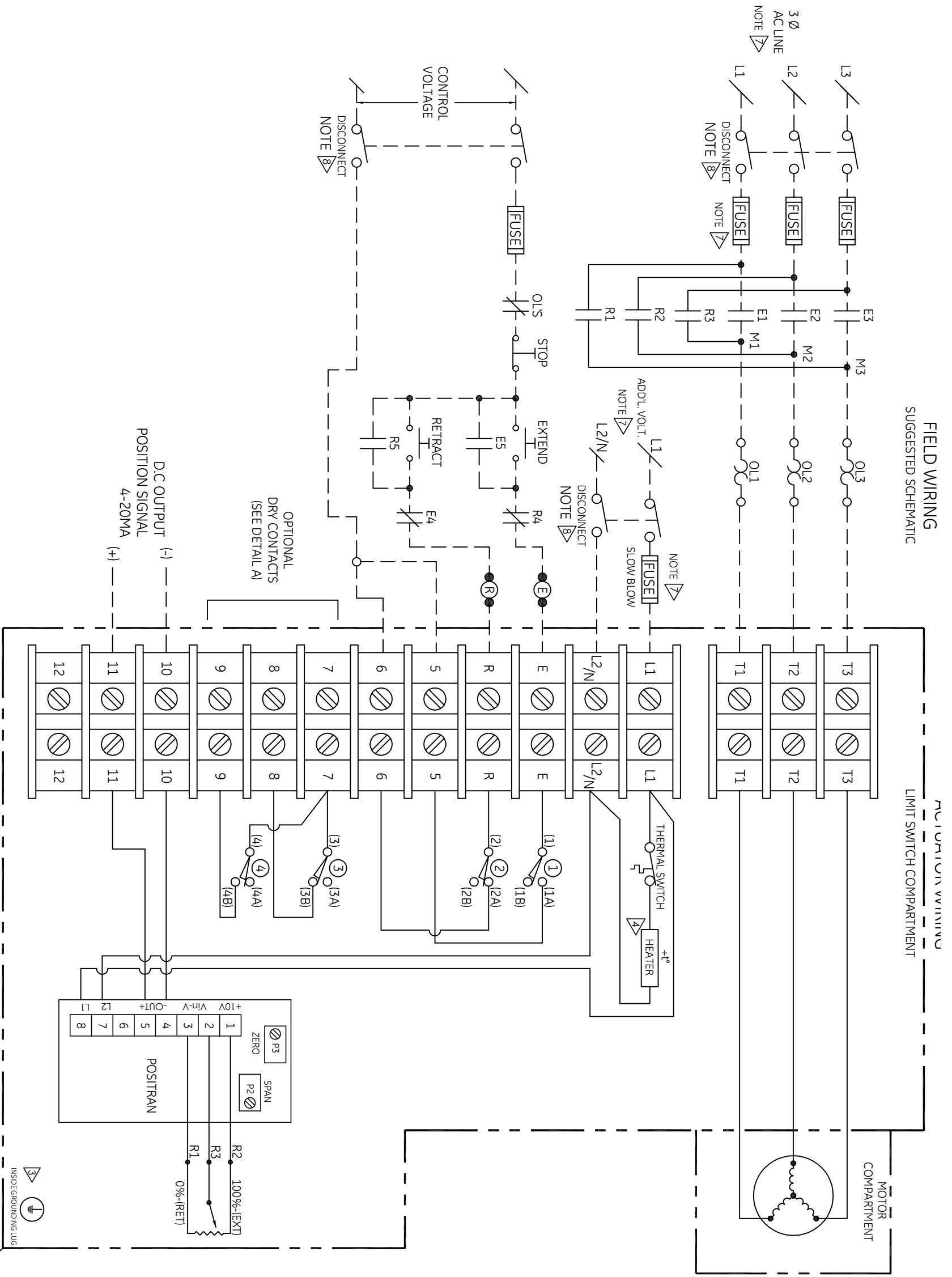
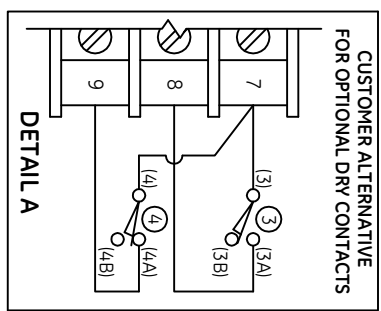


FIELD WIRING
SUGGESTED SCHEMATIC



SWITCH NO.	CONTACT	ACTUATOR POSITION			FUNCTION
		FULL RETRACT	INTERMEDIATE POSITION	FULL EXTEND	
①	A	————	————	————	FULL EXTEND POSITIO
	B	————	————	————	FULL RETRACT POSITIC
②	A	————	————	————	AUX (OPTIONAL)
	B	————	————	————	AUX (OPTIONAL)
③	A	————	————	————	AUX (OPTIONAL)
	B	————	————	————	AUX (OPTIONAL)
④	A	————	————	————	AUX (OPTIONAL)
	B	————	————	————	AUX (OPTIONAL)

SWITCH POSITION SHOWN WITH ACTUATOR IN FULLY EXTEND POSITION
 ■ CLOSED SWITCH CONTACT
 - - - - - OPEN SWITCH CONTACT



- NOTES:
- LIMIT SWITCH DATA: QUICK CONNECT TERMINALS MICROSWITCH V3L-3005-D8 OR EQUIVALENT. RATING: 15 AMP AND 1/2 HP, 125 OR 250 VAC, 1/2 AMP, 125 VDC, 1/4 AMP, 250 VDC, 5 AMP, 120 VAC "L" (LAMP LOAD).
 - OPTIONAL(OPT.) COMPONENTS SHOWN ARE AUX DRY CONTACTS.

- WARNING: PROTECTIVE EARTH GROUNDING, GROUNDING LUG MUST BE WIRED TO SUITABLE GROUNDING SYSTEMS WITH MIN. #10 AWG WIRE.
- HEATER IS INSTALLED, IT MUST BE WIRED TO CONTINUOUS POWER.
- IMPORT/EXPORT HARMONIZATION CODE HARDCOPY, 4906000000
- HI-POT TEST: PERFORM HI-POT TEST PER UL61010 F.3. (REFER TO IOM.) TEST AT TERMINALS T1, T2, & T3 PER MOTOR VOLTAGE. DISCONNECT L1 & L2 FROM TERMINALS 7 & 8 OF THE POSITRAN CARD. ISOLATE THE ENDS. TEST PER 120VAC AT TERMINAL BLOCK LOCATION L1, L2/N. TEST PER 240VAC AT SWITCH CONTACTS 1A AND 2A AND TERMINAL BLOCK LOCATIONS E, R, 5, & 6, THROUGH 9. DO NOT PERFORM HI-POT TEST ON TERMINAL BLOCK LOCATIONS 10 & 11, OR ON POSITRAN CIRCUITS.
- REFER TO UNIT NAME PLATE.
- DISCONNECT SWITCH: (NOT SUPPLIED WITH ACTUATORS) MUST BE SUITABLY LOCATED, EASILY REACHED AND MARKED AS THE DISCONNECTED DEVICE FOR THE EQUIPMENT.

REV.	DATE	ECN#	BY
-	24APR2015	65695	RC

REVISION TABLE	
LEGEND	
①③	- EXTEND POSITION LIMIT SWITCH
②④	- RETRACT POSITION LIMIT SWITCH
○	- WIRING CONNECTION
●	- SWITCH CONTACT
- - -	- CUSTOMER WIRING

DESCRIPTION WIRING DIAGRAM, 3 PHASE, PTRAN - EAGLE
 EXTERNAL REVERSING CONTACT, HTR/POT, OPT: AUX DRY CONTACTS

GE

FILENAME: 141220922
 DRAWN BY: ET
 APPVD BY: REF
 DATE: 21APR15
 SHEET: 1 of 1
 SIZE: B

PROPERTY AND CONFIDENTIAL

INTERPRET DRAWINGS PER ASME Y14.5 THIRD ANGLE PROJECTIC