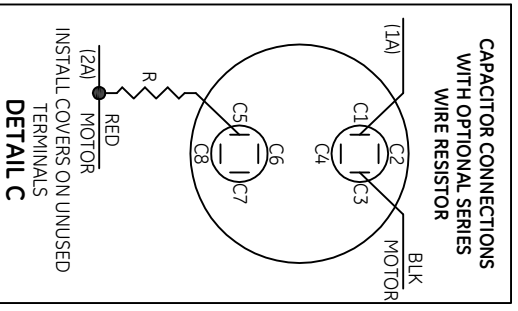
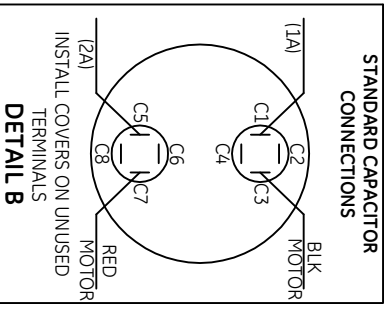
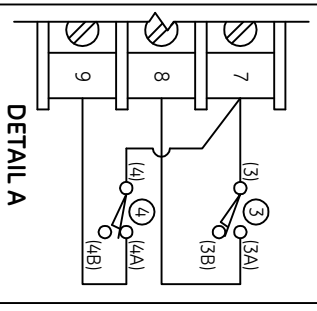
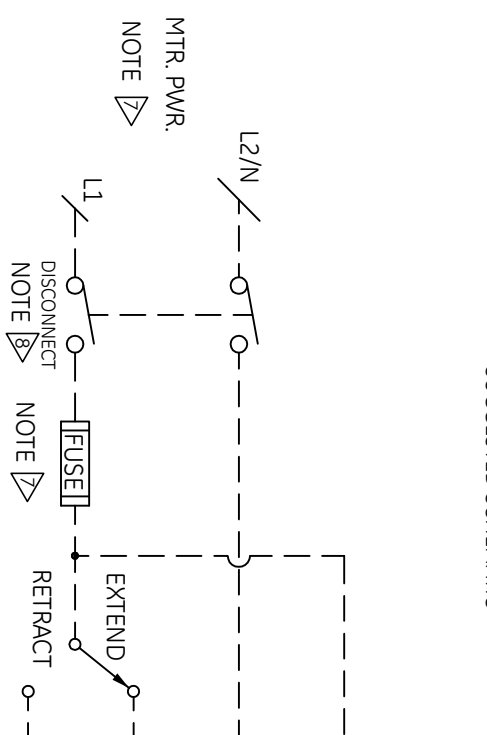


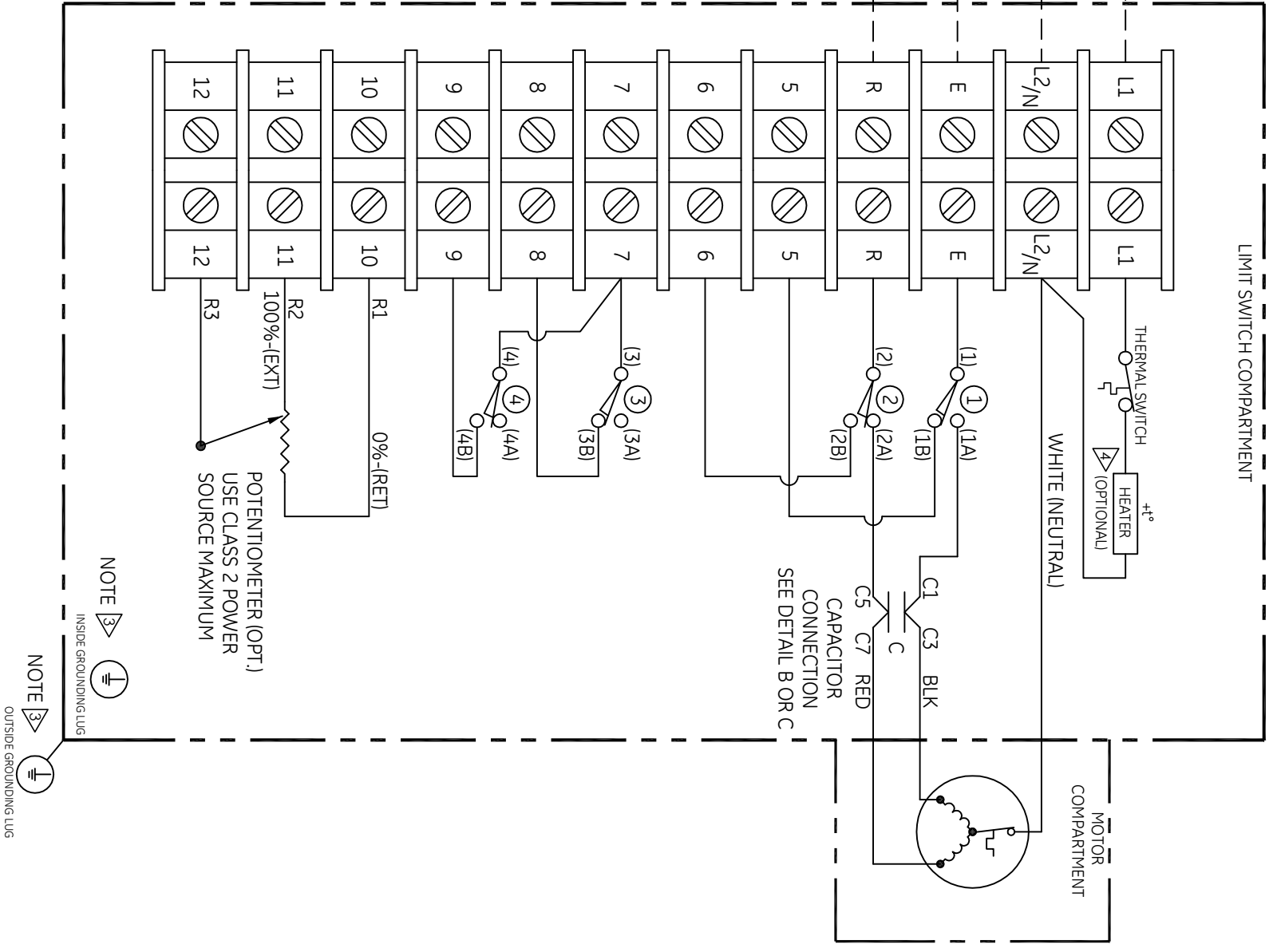
CUSTOMER ALTERNATIVE FOR OPTIONAL DRY CONTACTS



FIELD WIRING SUGGESTED SCHEMATIC



ACTUATOR WIRING



SWITCH NO.	CONTACT	ACTUATOR POSITION			FUNCTION
		FULL RETRACT	INTERMEDIATE POSITION	FULL EXTEND	
1	A	—	—	—	FULL EXTEND POSITIO
	B	—	—	—	
2	A	—	—	—	FULL RETRACT POSITIC
	B	—	—	—	
3	A	—	—	—	AUX (OPTIONAL)
	B	—	—	—	AUX (OPTIONAL)
4	A	—	—	—	AUX (OPTIONAL)
	B	—	—	—	AUX (OPTIONAL)

SWITCH POSITION SHOWN WITH ACTUATOR IN FULLY EXTEND POSITION
 ——— CLOSED SWITCH CONTACT
 - - - - - OPEN SWITCH CONTACT

NOTES:

- LIMIT SWITCH DATA: QUICK CONNECT TERMINALS MICROSWITCH V3L-3005-D8 OR EQUIVALENT. RATING: 15 AMP AND 1/2 HP, 125 OR 250 VAC, 1/2 AMP, 125 VDC, 1/4 AMP, 250 VDC; 5 AMP, 120 VAC "L" (LAMP LOAD).
- OPTIONAL (OPT.) COMPONENTS SHOWN ARE HEATER, POTENTIOMETER, SERIES WIRE RESISTOR, AND AUX DRY CONTACTS.
- WARNING: PROTECTIVE EARTH GROUNDING, GROUNDING LUG MUST BE WIRED TO SUITABLE GROUNDING SYSTEMS WITH MIN. #10 AWG WIRE.
- IF OPTIONAL HEATER IS INSTALLED, IT MUST BE WIRED TO CONTINUOUS POWER.
- IMPORT HARMONIZATION CODE HARDCOPY, 4906000000
- HI-POT TEST: PERFORM HI-POT TEST PER UL61010 F.3. (REFER TO IOM) TEST AT SWITCH CONTACTS 1A & 2A AND TERMINAL BLOCK LOCATIONS L1, L2/N, E, R, 5, & 6 PER RATED MOTOR VOLTAGE. TEST PER 240VAC AT TERMINAL BLOCK LOCATIONS 7 THROUGH 9. DO NOT PERFORM HI-POT TEST ON TERMINAL BLOCK LOCATIONS 10, 11, & 12.
- REFER TO UNIT NAME PLATE. DISCONNECT SWITCH:
- DISCONNECT SWITCH: (NOT SUPPLIED WITH ACTUATORS) MUST BE SUITABLY LOCATED, EASILY REACHED AND MARKED AS THE DISCONNECTED DEVICE FOR THE EQUIPMENT.

REV.	DATE	ECN#	BY
-	24APR2015	65695	RC
REVISION TABLE			

- LEGEND
- ①③ - EXTEND POSITION LIMIT SWITCH
 - ②④ - RETRACT POSITION LIMIT SWITCH
 - - WIRING CONNECTION
 - - SWITCH CONTACT
 - - - - - CUSTOMER WIRING



DESCRIPTION
 WIRING DIAGRAM, 1 PHASE, ON/OFF- EAGLE
 OPT: HTR/POT/SWR/AUX DRY CONTACTS

FILENAME 141120292
REV -
SCALE N.T.S.
SIZE B

DRAWN BY ET
APPVD BY REF
DATE 15APR15
SHEET 1 of 1

PROPERTY AND CONFIDENTIAL
 The information contained in this drawing is the sole property of Dresser Inc., and may not be used, reproduced, published or disclosed to others without express authorization thereof. It shall be returned to the owner upon demand.

INTERPRET DRAWING
 PER ASME Y14.5
 THIRD ANGLE PROJECTIC